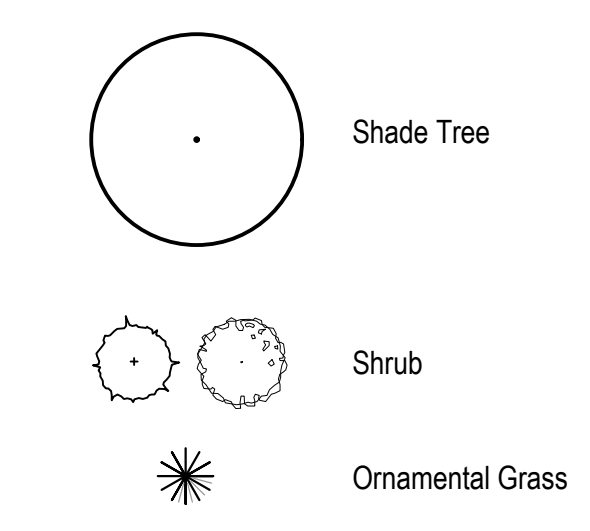


- GENERAL NOTES: LANDSCAPE**
- Notes indicated on grading plans shall pertain to landscape plans. Final grade of planting beds shall be as per grading plan.
  - The landscape contractor shall be responsible for making themselves familiar with all underground utilities and structures.
  - All existing plant material and trees shall be saved and protected unless otherwise noted. Contractor to protect new and existing trees and landscaping from damage and shall restore all areas disturbed as a result of construction.
  - Plant material shall be supplied from Northern Illinois nursery stock, shall be dug the planting season it is installed, and shall conform to the American Association of Nurseryman's standards.
  - Plant material shall be size and type specified. Substitution of plant material shall be on a case by case basis and approved in writing by the Owner's Representative. In no case shall plant material be smaller than indicated in the plans.
  - Do not willfully proceed with plantings as designed when it is obvious that obstructions and/or grade differences exist that may not have been known during the design process. Such conditions shall be immediately brought to the attention of the Owner's Representative.
  - All plant material shall be inspected and approved by the Owner's Representative prior to the installation of any and all plant material.
  - Plant locations shall be flagged in field with Owner's Rep. Final location of all plant material shall be subject to approval of the Owner's Representative prior to digging any holes. The landscape contractor is responsible for providing Owner's Representative with 48 hour minimum advance notice prior to planting.
  - Plants shall be watered on the day they are planted and maintained with watering until final acceptance of the project.
  - Apply a pre-emergent as per manufacturer's specification prior to installing mulch.
  - Beds and tree rings (6' diameter) shall have 3" of hardwood shredded mulch applied and a 4" deep spade edge at lawn. Trees that are not located in beds, shall have a tree ring.
  - Landscape plant material shall be guaranteed for 12 months from final acceptance. Any plant 1/3 dead or more shall be replaced under the guarantee.
  - Contractor to prepare landscape beds by roto-tilling 2" of Mushroom Compost into new beds. Do not add compost nor roto-till within drip line of existing trees.
  - Lawn Seeding shall be under favorable weather conditions, and shall follow dates in specification.
  - Turf mixes shall be installed and lawn established at all disturbed areas.
  - Do not overseed into mulch beds and paving.
  - Contractor shall restore all areas disturbed as a result of construction.

**LEGEND**



**PLANT LIST**

Shade Trees - Balled and Burlap			
5	2.5' cal	<i>Celtis occidentalis</i>	Hackberry
3	2.5' cal	<i>Ginkgo biloba 'Autumn Gold'</i>	Autumn Gold Ginkgo
8	2.5' cal	<i>Gleditsia triacanthos var. inermis 'Skycole'</i>	Skyline Honeylocust
7	2.5' cal	<i>Gymnocladus dioica 'Espresso'</i>	Espresso Kentucky Coffeetree
5	2.5' cal	<i>Ulmus 'Morton'</i>	Accolade Elm
28	Total		

Evergreen Shrubs - Balled and Burlap or Pot			
40	24" Ht. x 24" Spr.	<i>Taxus x media 'Densiformis'</i>	Dense Yew
40	Total		

Deciduous Shrubs - Balled and Burlap or Pot			
30	24" Ht. x 24" Spr.	<i>Hydrangea arborescens 'NCHA3'</i>	Invincibelle Ruby Hydrangea
7	24" Ht. x 36" Spr.	<i>Rhus aromatica 'Grow-Low'</i>	Grow-Low Sumac
20	24" Ht. x 24" Spr.	<i>Rosa 'Radwhite'</i>	White Knock Out Rose
23	24" Ht. x 24" Spr.	<i>Spiraea japonica 'Galen'</i>	Spiraea Double Play Artisan
24	36" Ht. x 24" Spr.	<i>Syringa x 'Panda'</i>	Purple Bloomerang Lilac
22	18" Ht. x 24" Spr.	<i>Weigela x 'Dark Horse'</i>	Dark Horse Weigela
126	Total		

Perennials, Ornamental Grasses, and Groundcovers			
6	#/cont.	<i>Pennisetum alopercuroides 'Hamlen'</i>	Hamlen Fountain Grass
14	#/cont.	<i>Sporobolus heterolepis</i>	Prairie Dropseed
20	Total		

**REQUIREMENT CHART**

A. Parkway Landscaping			
Location	Requirement	Distance	Proposed Shade Trees
IL Route 47	1 Shade Tree/ 50'	465/50=9.3	10
Waterpark Way	1 Shade Tree/ 50'	354/50=7.1	8

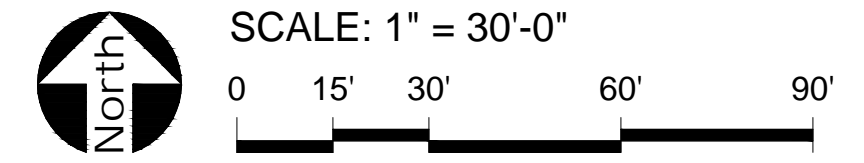
  

B. Perimeter Landscaping - Not Applicable			
Location	Requirement	Quantity	Proposed Shade Trees
Interior			
Parking Lot	1 shade tree/ 20 spaces	48/20 = 2.4	3

Perimeter Parking Lot Landscape					
Location	Requirement	Quantity	Proposed Shade Trees	Proposed Shrubs	
North	5' buffer: 2 trees & 15 shrub/ 100 LF	166/100=1.66 1.66*2=3.32 1.66*15=24.9	4	25	
South - Waterpark Way	5' buffer: 2 trees & 15 shrub/ 100 LF	109/100=1.09 1.09*2=2.18 1.09*15=16.35	3	17	
East - Adjacent Property	N/A	N/A	N/A	N/A	
West - IL Route 47	N/A	N/A	N/A	N/A	

Lot Landscaping					
Location	Requirement	Distance	Proposed Shade Trees	Proposed Shrubs	
Entire Lot	2 trees & 15 shrubs/ 20,000 sf of lot	219,542/20000=10.9 10.9*2=21.8 10.9*15=163.5	22	164	



**PROJECT**  
**Gas N Wash**  
Yorkville, Illinois



**SHEET TITLE**  
**Landscape Plan**

**SHEET NUMBER L1.0**

**DRAW / REVISION**

LD/VT	Review	21JUN2019