

ALTA/NSPS LAND TITLE SURVEY

Items Corresponding to Schedule B

THE FOLLOWING ARE ITEMS IN SCHEDULE B IN TITLE INSURANCE COMPANY TITLE COMMITMENT NO. WITH AN EFFECTIVE DATE OF

Legal Description

LOT 2, IN RESUBDIVISION OF LOT 1 IN FOX HILL, UNIT 6, A PLANNED UNIT DEVELOPMENT, BEING A RESUBDIVISION OF LOT 1 IN FOX HILL, UNIT 6, BEING A SUBDIVISION OF PART OF SECTION 30, TOWNSHIP 37 NORTH, RANGE 7 EAST OF THE THIRD PRINCIPAL MERIDIAN, ACCORDING TO THE PLAT OF SAID RESUBDIVISION RECORDED AUGUST 30, 2005 AS DOCUMENT 200500026016, AND CERTIFICATE OF CORRECTION RECORDED SEPTEMBER 25, 2005 AS DOCUMENT 200500029458, IN KENDALL COUNTY, ILLINOIS.

Legend of Symbols & Abbreviations

■ SET IRON ROD	○ STORM SEWER MANHOLE	EM ELECTRIC METER
□ FOUND IRON ROD	○ SANITARY SEWER MANHOLE	TR TRANSFORMER
▲ SET MAG NAIL	○ FIRE HYDRANT	GM GAS METER
7.77' MEASURED DATA	○ POWER POLE	TP TELEPHONE PEDESTAL
(7.77') RECORDED DATA	○ GUY WIRE	OHU OVERHEAD UTILITIES
P.U.E. PUBLIC UTILITY EASEMENT	○ SIGN	ASPHALT SURFACE
D.E. DRAINAGE EASEMENT	○ LIGHT POLE	AGGREGATE SURFACE
B.S.L. BUILDING SETBACK LINE	○ UNKNOWN MANHOLE	CONCRETE SURFACE
○ BOLLARD	○ PIPELINE MARKER	

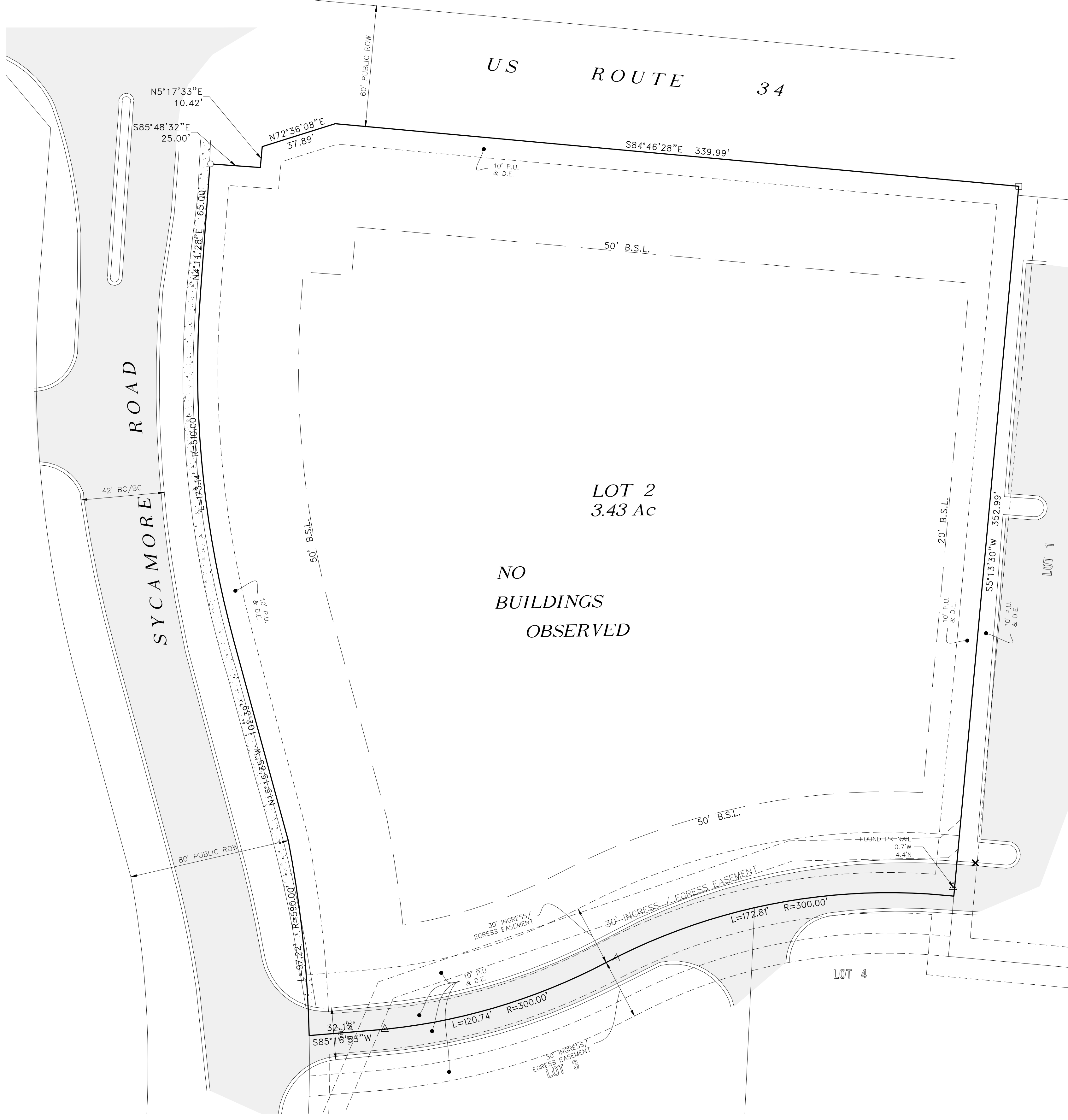
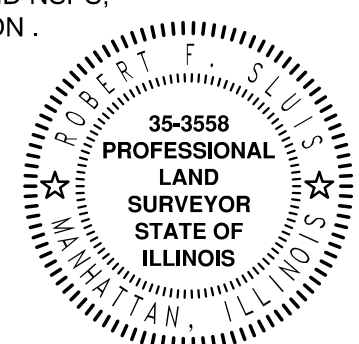
**DRAFT
FOR REVIEW
ONLY**
3/13/19

TO: TITLE INSURANCE COMPANY

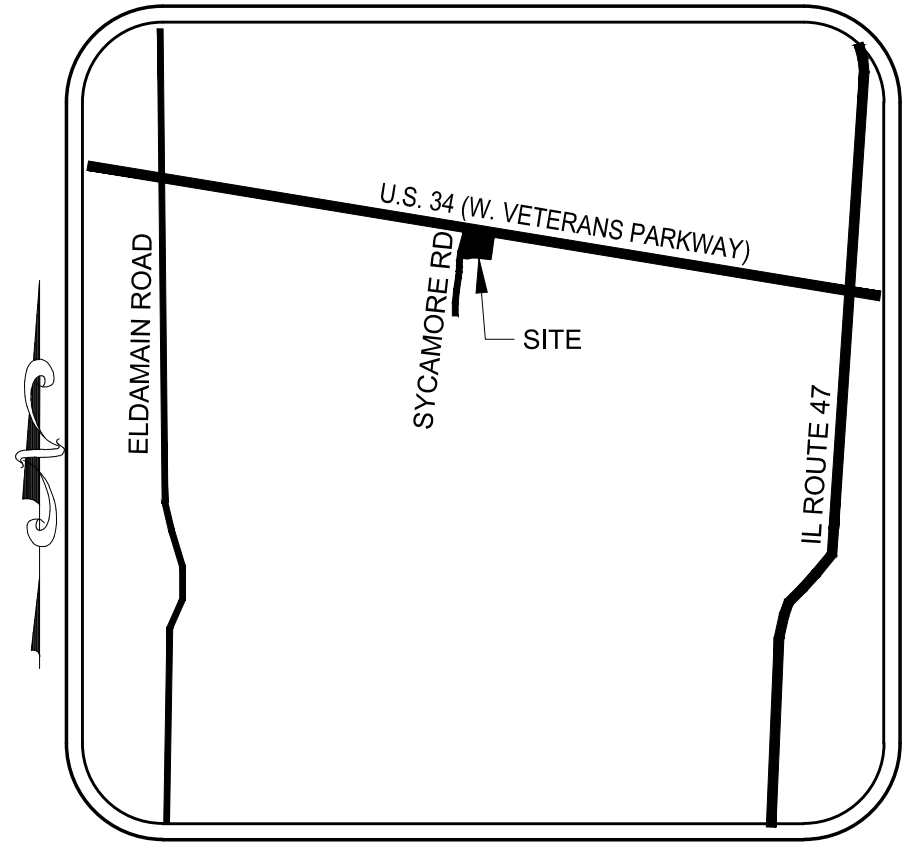
THIS IS TO CERTIFY THAT THIS MAP OR PLAT AND THE SURVEY ON WHICH IT IS BASED WERE MADE IN ACCORDANCE WITH THE 2016 MINIMUM STANDARD DETAIL REQUIREMENTS FOR ALTA/NSPS LAND TITLE SURVEYS, JOINTLY ESTABLISHED AND ADOPTED BY ALTA AND NSPS, AND INCLUDES ITEMS () OF TABLE A THEREOF. THE FIELD WORK WAS COMPLETED ON .

DATED:

ROBERT F. SLUIS
ILLINOIS PROFESSIONAL LAND SURVEYOR #35-3558
LICENSE EXPIRES NOVEMBER 30, 2020



Vicinity Map

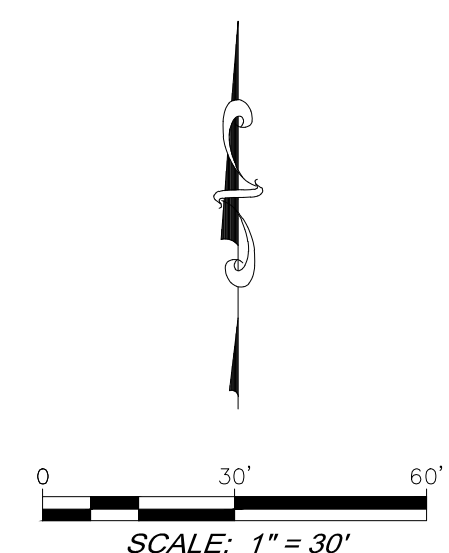


Miscellaneous Notes

- MN1 DIMENSIONS ON THIS PLAT ARE EXPRESSED IN FEET AND DECIMAL PARTS THEREOF UNLESS OTHERWISE NOTED.
- MN2 AREA = 148,172 SQ. FT. 3.4 ACRES
- MN3 PIN - 02-30-203-006-0000
- MN4 BEARING BASIS IS ASSUMED

Utility Notes

- UN1 THE LOCATION OF UTILITIES SHOWN HEREON ARE FROM OBSERVED EVIDENCE OF ABOVE GROUND APPURTENANCES ONLY. THE SURVEYOR WAS NOT PROVIDED WITH UNDERGROUND PLANS OR SURFACE GROUND MARKINGS TO DETERMINE THE LOCATION OF ANY SUBTERRANEAN USES.
- UN2 CALL "J.U.L.I.E." FOR FIELD LOCATIONS OF UNDERGROUND UTILITY LINES 1-800-892-0123



REVISIONS		
DATE	BY	DESCRIPTION

M GINGERICH GEREAX & ASSOCIATES
Professional Design Firm License # 184.005003
P. 815-478-9680 www.mg2a.com F. 815-478-9685
25620 S. GOUGAR RD | MANHATTAN, IL, 60442

ORDERED BY: **GAS n WASH**

DATE ISSUED: 03-06-2019
JOB NO.: 19-101

DRAWN BY: NIB
CHECKED BY: RFS
FILE:

PAGE 1 OF 1