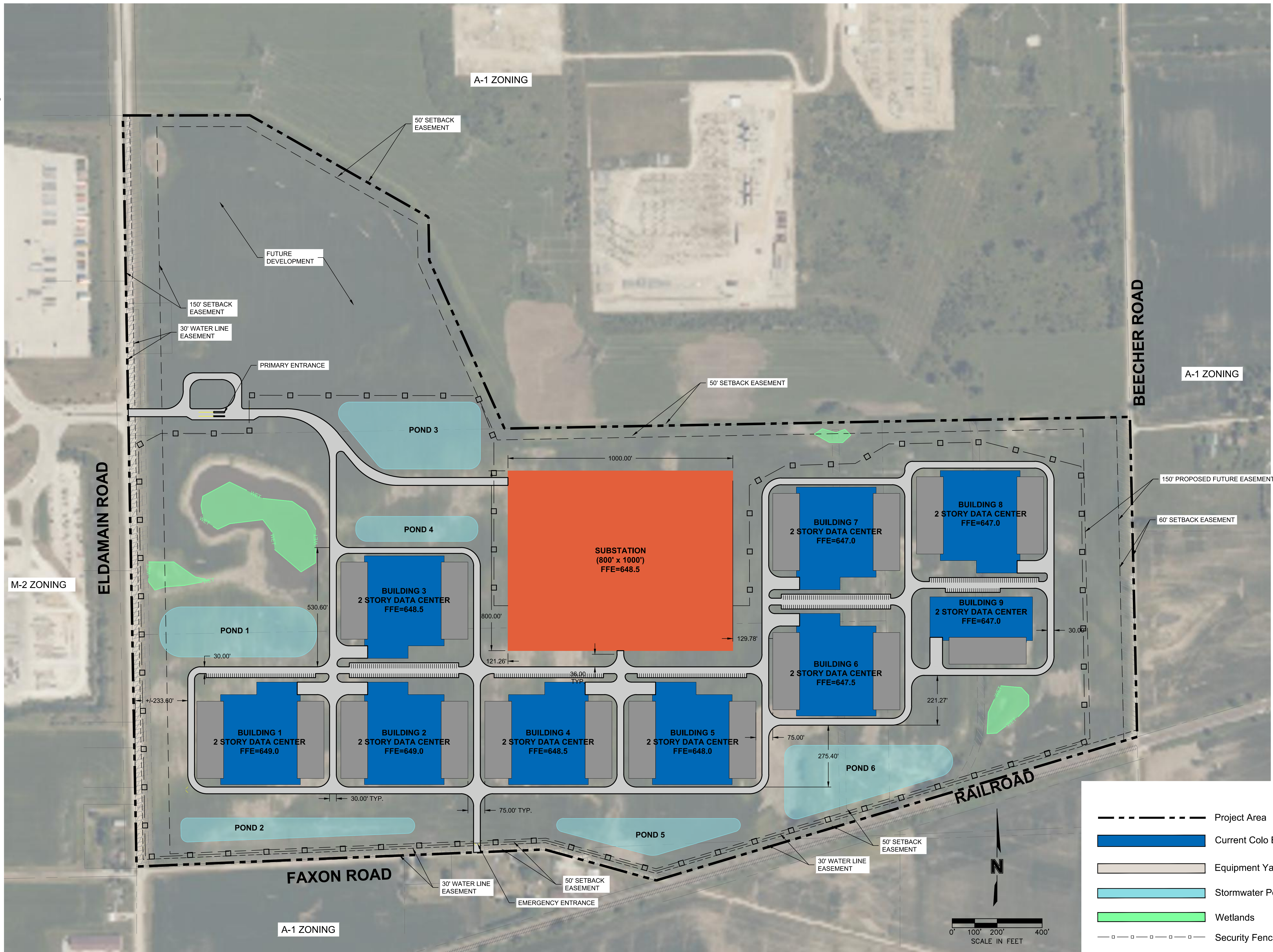


SITE DATA	
TOTAL SITE AREA	9,956,767.47 SF (228.57 AC +/-)
MAX BUILDING HEIGHT	N/A
SETBACKS*	
FRONT (WEST) REQUIRED	25'-0"
FRONT (WEST) PROVIDED	150'-0"
REAR (EAST) REQUIRED	0'-0"
REAR (EAST) PROVIDED	60'-0"
SIDE (N + S) REQUIRED	20'-0"
SIDE (N + S) PROVIDED	50'-0"
TRANSITIONAL SIDE	N/A
*SETBACKS APPLY ONLY TO THE PERIMETER OF THE PROPERTY. IN THE EVENT THAT THE PROPERTY IS RESUBDIVIDED, THERE SHALL BE NO SETBACKS APPLICABLE TO INTERNAL LOT LINES.	
PARKING	
DATA CENTER PARKING RATIO	0.2 SPACES PER 1,000 SF
REQUIRED PARKING (# SPACES)	490
PROVIDED PARKING (# SPACES)	432
ACCESSIBLE PARKING REQUIRED (# SPACES)	9
ACCESSIBLE PARKING PROVIDED (# SPACES)	27
COVERAGE	
MINIMUM LOT SIZE	N/A
MAXIMUM BUILDING COVERAGE	85%
PROVIDED BUILDING COVERAGE	12.3%
MAXIMUM SITE COVERAGE	85%
PROVIDED SITE COVERAGE	35.6%
MAXIMUM MAX FAR	85%
PROVIDED SITE COVERAGE	24.6%

BUILDING AREAS			
BUILDING #	SIZE	HEIGHT (TOP OF BUILDING)	HEIGHT (TOP OF EQUIPMENT)
BUILDING 1	287,400 SF	55'-0"	70'-0"
BUILDING 2	287,400 SF	55'-0"	70'-0"
BUILDING 3	287,400 SF	55'-0"	70'-0"
BUILDING 4	287,400 SF	55'-0"	70'-0"
BUILDING 5	287,400 SF	55'-0"	70'-0"
BUILDING 6	287,400 SF	55'-0"	70'-0"
BUILDING 7	287,400 SF	55'-0"	70'-0"
BUILDING 8	287,400 SF	55'-0"	70'-0"
BUILDING 9	152,000 SF	55'-0"	70'-0"
TOTAL	2,451,200 SF	N/A	N/A

Proposed Phasing Schedule			
Phase	Building#	Stormwater Pond Serving Phase	Ancillary Infrastructure
1	4	Pond 3 & 5	Primary Access Road, Fire Access Road, Building Perimeter Road, On-Site Parking, Substation and Perimeter Fencing.
2	2	Pond 2	Building Perimeter Road and On-Site Parking.
3	3	Pond 1 & 4	Building Perimeter Road and On-Site Parking.
4	1	Pond 1 & 2	Building Perimeter Road and On-Site Parking.
5	5	Pond 5	Building Perimeter Road and On-Site Parking.
6	6	Pond 6	Building Perimeter Road and On-Site Parking.
7	7	Pond 6	Building Perimeter Road and On-Site Parking.
8	8	Pond 6	Building Perimeter Road and On-Site Parking.
9	9	Pond 6	Building Perimeter Road and On-Site Parking.



CYRUS ONE - YORKVILLE, ILLINOIS - PRELIMINARY PUD PLAN

SCALE: 1" = 200' AT FULL SIZE (24x36)
DATE: May 21, 2024