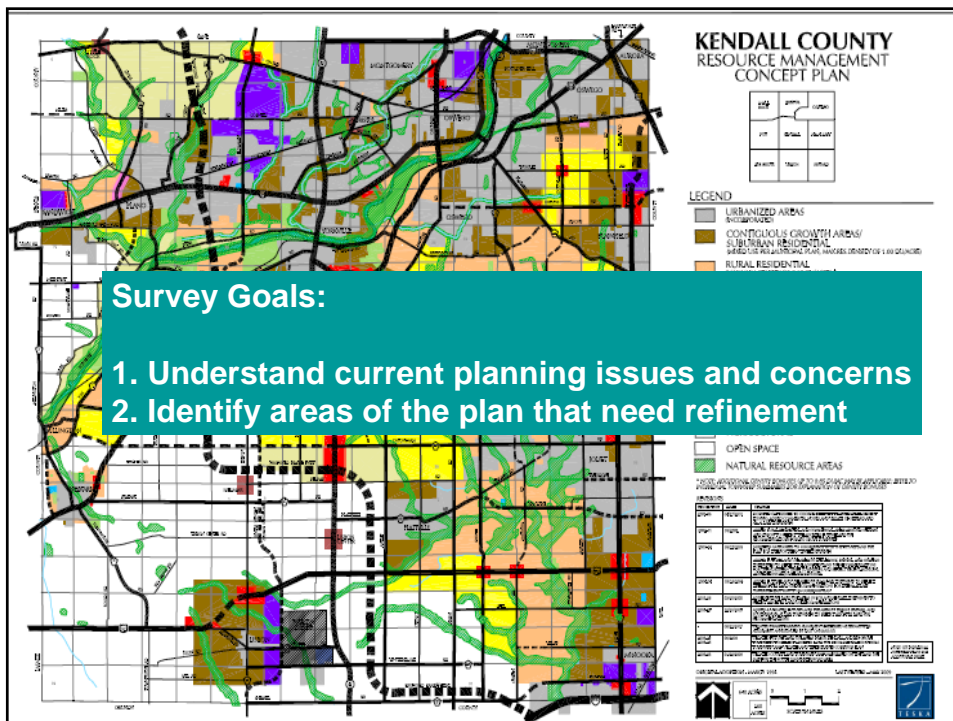


**2010 Land Resource
Management Plan (L.R.M.P.) Survey
Summary of Results
Sept. 16th, 2010**



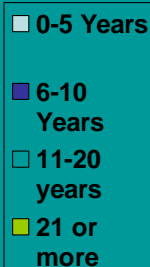
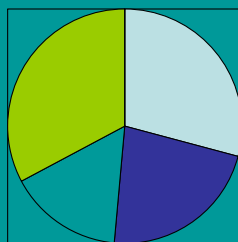
Survey Methodology

- Follow-up to similar surveys in 1990 and 2000
- Conducted two parallel surveys:
 - On-Line (with optional print version available a public places throughout the County)
 - Random Sample Mail Survey of 2,000 households
- Good response rate, 32% for random sample, producing a 4 to 5% margin of error
- Results generally similar between on-line and random sample



Who responded?

How many years have you lived in Kendall County?



- Approximately 30% lived in unincorporated areas (70% in municipalities)
- Greatest response from Oswego (21% and Yorkville (16.5%)

Age of Survey Respondents:

Answer Options	2010 Online	2010 Paper	2000	1990
19 and under	0.0%	0.0%	n/a	1%
20 to 29	6.0%	4.9%	5%	8%
30 to 39	21.1%	20.9%	22%	25%
40 to 49	23.7%	22.5%	27%	25%
50 to 59	19.0%	21.6%	23%	16%
60 to 69	20.3%	18.0%	13%	14%
70 and over	9.9%	12.2%	15%	12%



Do you own property in Kendall County?

Answer Options	2010 Online	2010 Paper	2000	1990
Yes	93.7%	100.0%	96%	91%
No	6.3%	0.0%	4%	9%

Do you expect to be living in Kendall County five years from now?

Answer Options	2010 Online	2010 Paper	2000	1990
Yes	70.5%	68.8%	74%	89%
No	6.2%	9.1%	5%	9%
I'm not sure	23.3%	22.1%	21%	2%

Where Did You Live Before?

Illinois Counties

Answer Options	2010 Online	2010 Paper	2000	1990
I've always lived in Kendall County	10.2%	10.8%	16%	20%
Another country	1.3%	1.4%	1%	0%
Another state	12.2%	11.3%	15%	14%
Cook County	9.6%	11.6%	9%	8%
DeKalb County	3.6%	1.6%	5%	5%
DuPage County	28.9%	27.5%	20%	8%
Grundy County	2.3%	0.2%	1%	2%
Kane County	18.8%	21.5%	32%	38%
LaSalle County	1.3%	2.4%	5%	5%
Will County	7.3%	7.6%	6%	6%
Other Illinois county	4.4%	4.2%	8%	9%

What is Your Principal Occupation?

Answer Options	2010 Online	2010 Paper	2000	1990
Farmer	1.2%	0.5%	4%	7%
Educator	7.8%	8.1%	9%	4%
Human services, nurse, social worker	4.3%	6.2%	3%	2%
Business owner or manager	14.2%	14.0%	21%	20%
Unemployed	2.9%	2.1%	n/a	n/a
Manufacturing or warehouse	2.0%	4.2%	13.5%	19%
Professional	38.3%	30.4%	8%	5%
Retired	20.9%	23.7%	16%	4%
Student	0.6%	0.0%	0.5%	0%
Homemaker	5.2%	4.4%	4%	0%
Construction	2.6%	6.4%	n/a	n/a

15 Respondents wrote in Government/Public Sector

Why Did You Move to Kendall County?

Answer Options	2010 Online	2010 Paper	2000	1990
Less congestion/more open space	67.8%	63.9%	65.5%	40.4%
Reasonable cost of living	51.8%	51.9%	48.7%	39.6%
Quality of schools	25.3%	31.8%	40.4%	37.6%
Lower crime rate	34.4%	31.3%	40.4%	36.8%
Near employment	21.2%	24.2%	29.3%	40.8%
Near family/friends	25.1%	29.2%	23.6%	25.9%
Kendall County is a good place to live	35.3%	32.1%	36.8%	-
Recreational opportunities	11.3%	6.6%	8.8%	5.1%

Write-In: Born here (32) and affordable/cost of living/low taxes (25)

Growth in Kendall County between 2000 and 2010 was:

Answer Options	2010 Online	2010 Paper
Too fast	62.6%	55.7%
Just right	23.6%	23.4%
Too slow	5.1%	3.4%
No opinion	8.7%	17.4%

What type of new growth is desired?

Answer Options	Strongly agree	Agree	Disagree	Strongly disagree	No opinion
Protect Agricultural lands.	40% (40%)	34% (39%)	14% (11%)	5% (2%)	6% (8%)
Promote residential growth.	11% (6%)	33% (38%)	33% (32%)	17% (14%)	6% (9%)
Attract manufacturing growth.	32% (25%)	47% (47%)	12% (14%)	6% (8%)	3% (7%)
Attract commercial/retail growth.	36% (26%)	46% (49%)	12% (15%)	4% (5%)	2% (4%)
Attract office growth.	36% (20%)	45% (53%)	11% (13%)	3% (5%)	5% (10%)

2010 online results (2010 paper results in parenthesis)

Desired Planning Effort

- County and Municipalities should continue to regulate growth (68-70%)
- More effort should be made to educate the public on growth issues (82-85%) – up from 66% in 1990
- Split opinion on the need for more land use regulation in the County (49 to 53%)



Traffic Congestion

- Traffic Congestion on State and Federal Highways is getting worse (75% identified as a problem in 2010 vs. 67% in 2000)
- Traffic on County and Township roads is a concern, but not as bad as State Routes
- (54% ranked as not a problem in 2010 vs. 40% in 2000)
- Many still not willing to pay more taxes to bring Metra service to Kendall County (65% vs. 58% in 2000).

How Far Should Metra Service be Extended?

Answer Options	2010 Online	2010 Paper
East (Oswego, Montgomery)	23.9%	20.3%
Central (Yorkville)	20.5%	15.3%
West (Plano, Yorkville, Sandwich)	34.8%	25.4%
I don't agree Metra service should be provided	20.8%	39.0%

Willing to pay more taxes?

Answer Options	2010 Online		2010 Paper	
	Yes	No	Yes	No
To enhance forest preserves	44%	49%	31%	63%
To purchase forest preserve	43%	52%	28%	66%
To help develop and maintain recycling programs	47%	47%	41%	51%
To help finance solid waste disposal	28%	62%	22%	66%
To provide better public transportation for citizens through the Kendall Area Transportation Service (KATS)	42%	51%	25%	63%
To provide housing for the elderly	39%	49%	35%	54%
To provide low to moderate income housing	14%	77%	10%	84%
To upgrade criminal justice and law enforcement	46%	44%	47%	45%

Economic Development Suggestions

Answer Options	2010 Online		2010 Paper	
	Yes	No	Yes	No
Provide local government financial incentives to new business and industry.	70%	25%	71%	23%
Provide local government financial incentives to existing business and industry.	67%	28%	66%	27%
Promote tourism.	59%	33%	49%	38%

Commercial Development Desired

Answer Options	2010 Online	2010 Paper	2000
Family sit down restaurant	86%	78%	62%
Agriculture related business	74%	65%	54%
Local retail store / small business	85%	77%	-
Grocery store	71%	59%	47%
Drug store	55%	45%	47%
Medical/dental services	78%	65%	39%
Big box retail	55%	49%	52%
Retirement center/nursing home	70%	59%	38%
Child care center	60%	53%	26%
Gas station/auto services	50%	46%	20%
Fast food franchise	44%	43%	19%
Convenience store	45%	44%	15%
Liquor vendor	30%	24%	5%

Resource Protection Importance

Answer Options	Strongly agree	Agree	Disagree	Strongly disagree	No opinion
Woodlands with mature trees	62%	32%	2%	1%	4%
Wetlands	40%	41%	7%	2%	10%
Farmsteads	38%	44%	6%	1%	11%
Creeks and flood prone areas	41%	41%	7%	1%	10%
Steep slopes	22%	30%	17%	3%	29%
Groundwater recharge areas	36%	38%	4%	1%	21%
Historic structures	42%	39%	8%	2%	9%
Prime farmland	49%	36%	4%	1%	10%

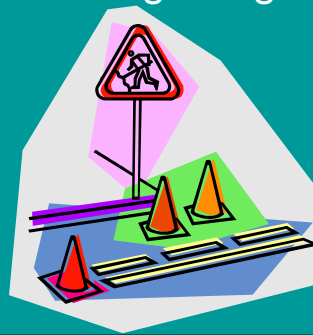
Is Your Neighborhood a Safe Place to Live?



Answer Options	2010 Online	2010 Paper	2000
Yes	93.7%	92.4%	90%
No	3.9%	3.0%	2%
Don't know	2.4%	4.6%	8%

Neighborhood Issues

- No major problems reported in the 2010 survey
- Street Maintenance only area with some concern (51% noting a slight to major problem)



Areas Where Local Governments should improve cooperation

Answer Options	Major problem	Slight problem	Not a problem	No opinion
Solid waste disposal	5% (2%)	12% (9%)	76% (77%)	7% (12%)
Drinking water availability	8% (3%)	15% (13%)	76% (81%)	1% (3%)
Air pollution	2% (2%)	23% (18%)	73% (78%)	2% (3%)
Water pollution	7% (2%)	19% (13%)	68% (75%)	6% (9%)
Traffic congestion	25% (21%)	34% (37%)	41% (41%)	1% (1%)
Smells, noise or dust from agricultural/livestock	4% (3%)	16% (13%)	77% (80%)	3% (4%)
Smells, noise or dust from nonagricultural businesses	5% (3%)	19% (14%)	71% (79%)	4% (5%)
Recycling	7% (3%)	20% (13%)	70% (80%)	3% (4%)
Hazardous waste disposal	8% (3%)	18% (13%)	64% (71%)	9% (13%)

Areas Where Local Governments should improve cooperation

Answer Options	Major problem	Slight problem	Not a problem	No opinion
Unightly vacant lots	21% (13%)	26% (24%)	51% (61%)	2% (2%)
Sewage treatment plant	3% (2%)	11% (9%)	71% (71%)	15% (18%)
Groundwater contamination	8% (4%)	25% (17%)	61% (67%)	6% (12%)
Seepage from septic tanks	2% (1%)	12% (8%)	72% (74%)	15% (17%)
Water/sediment runoff	10% (4%)	24% (15%)	59% (69%)	7% (12%)
Deteriorating structures/buildings	7% (4%)	28% (24%)	64% (70%)	1% (3%)
Street and road maintenance	19% (14%)	39% (37%)	40% (47%)	1% (2%)

Road Network

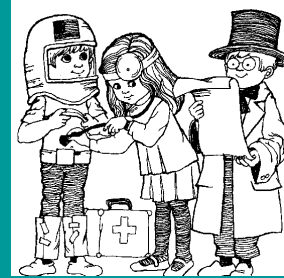
Answer Options	2010 Online	2010 Paper
Works well	11.2%	14.5%
Existing roads are well located, but need to expand capacity	48.8%	46.0%
Existing roads are adequate, but enhanced maintenance is necessary	23.4%	23.3%
New roads are needed	16.6%	16.2%

Transportation Priorities

1. Widening of Route 47 (2.9 rating average)
2. A new north-south connection extending south from Orchard Road to Grove Road (#5 online) (4.64 avg.)
3. Extending Metra service into Kendall County (#2 online) (4.69 avg.)
4. WIKADUKE corridor (generally along Ridge Road) (#3 online) (4.97 avg.)
5. Provision of regional bike trails, such as along the Fox River (#4 online) (5.01 avg.)
6. Realignment of Grove Road at Route 126 (#8 online) (5.27 avg.)
7. Eldamain/Lisbon Extension across the Fox River (#6 online) (5.44 avg.)
8. The Prairie Parkway (#7 online) (5.52 avg.)
9. Smoothing of the curves on U.S. Route 52 near Lisbon (6.34 avg.)

Biggest Threat to Your Quality of Life

- Cost of Living (64.2%)
- Increased Traffic (48.7%)
- Lack of Jobs within the County (30.1%)
- Increased Crime (28.8%)



Adequate Protected Open Space?

Answer Options	2010 Online	2010 Paper
Yes, the current amount of open space is appropriate to serve the population	62.7%	73.7%
No, too much open space	5.0%	3.5%
No, not enough open space	32.4%	22.8%

Consider Allowing Limited Planned Residential Development in Ag. Areas

Answer Options	2010 Online	2010 Paper
Yes	56.7%	56.7%
No	29.0%	24.6%
No opinion	14.4%	18.7%

Preferred Approaches to New Residential Development

1. Promote the “Conservation Design” approach (2.55 rating average)
2. Promote “Smaller Estate Lots” of 1 to 1.5 acres (2.77 average)
3. Promote “Estate Lot Residential” development (2.82 average)
4. Promote “Farmettes” or other very large lots (3.15 average)
5. Promote “Suburban Residential” development (4.02 average)

Allow Suburban Density in Unincorporated Areas if Community Water and Sewer Provided?

Answer Options	2010 Online	2010 Paper
Yes	22.9%	21.2%
No	67.6%	62.3%
No opinion	9.5%	16.6%

There are sufficient jobs in the area

Answer Options	2010 Online	2010 Paper	1990
Strongly agree	3.4%	5.0%	10%
Agree	20.7%	22.9%	30%
Disagree	41.6%	40.5%	33%
Strongly disagree	26.2%	15.1%	9%
Don't know	8.1%	16.4%	18%

Employment Opportunities for:

Answer Options	Excellent	Good	Fair	Poor	No opinion
Non-high school graduates	1%	15%	22%	43%	19%
High school graduates	2%	21%	39%	26%	13%
College graduates	3%	13%	31%	38%	15%
Persons seeking part-time employment	5%	29%	34%	19%	13%

- In 2000, 47% said opportunities were good to excellent for H.S. graduates, 41% for college graduates, and 56% for part-time

Water Availability will be a critical issue in the next 10 years in Kendall County.

Answer Options	2010 Online	2010 Paper
Strongly Agree	34.2%	23.7%
Agree	37.6%	38.8%
Disagree	13.6%	13.4%
Strongly disagree	1.8%	2.1%
No opinion	12.8%	21.9%

What Planning Issue Should Have Been Handled Differently?

1. Residential Growth (243)
2. Transportation/Traffic Issues (155)
3. Commercial/Industrial/Manufacturing Growth (48)
4. Landfill (19)
5. School Expansion (18)
6. Forest Preserve Acquisitions (16)
7. Government Buildings (8)
8. Countryside Center (7) and Open space (7) and Government coordination (7)
9. Downtown Redevelopment (6)
10. Metra (5) and Plano Racetrack (5) and Annexations (5)
11. Other (54)

What Would You Like to See in the Next 10 Years?

1. Controlled/Stable Development (149)
2. Roadway/Traffic Improvements (136)
3. Economic Development (114)
4. Increase in local retail/restaurant (65)
5. Decrease in taxes (55)
6. Metra Extension (68)
7. Protection of Farmland/Rural Characteristics (47)
8. Improved Parks/Trails/Recreation(38)
9. Better government coordination (16)
10. Less government (7)
11. Public transportation (5)
12. Increase property taxes (1)
13. More residential development (1)



What Do We Do With This Information?

- Guidance for Update to L.R.M.P.
 - Pretty much on-track
 - Consider additional focus on Economic Development
 - Land Use/Transportation Link is Critical
 - Agricultural Protection is still important
- Continue to Promote Intergovernmental Cooperation
- Offer Educational Opportunities on Key Planning Topics
- Work with IDOT on Major roadway improvements
- Work with Metra/RTA on commuter rail extension
 - Residents prefer extension to west side of County
 - Increasing taxes to pay for service will be a tough sell
- Continue to monitor/participant in water planning efforts